

vordere Mitte/Fadenlauf/Stoffbruch

## Fleecemütze

im Stoffbruch zuschneiden

1x Aussenstoff: Fleece, Plüsch, Sweat, Nicky  
1x Innenstoff: Flanell, Plüsch, Sweat, Nicky

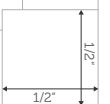
enthält 1 cm Nahtzugabe

A2  
1



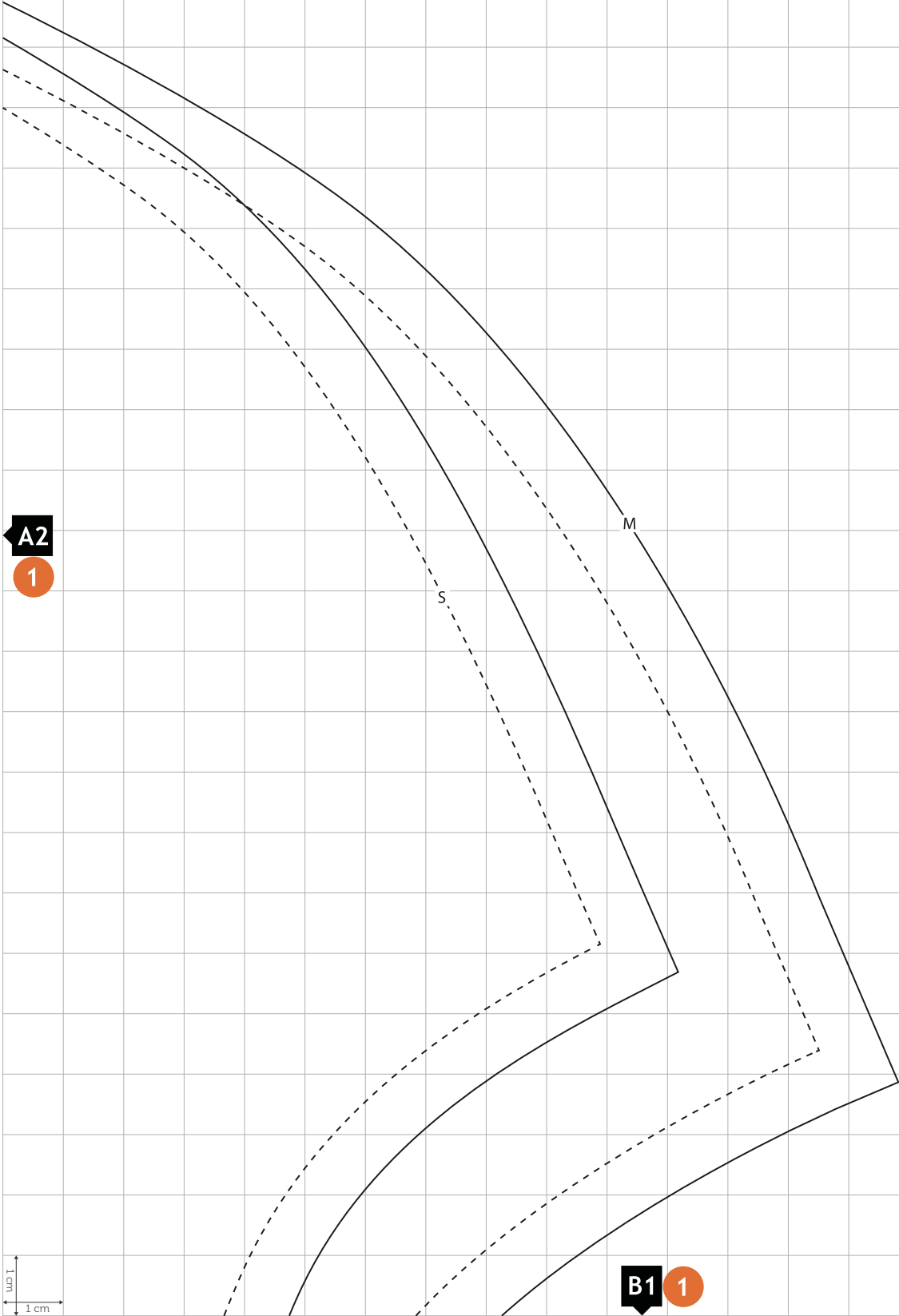
Größenkontrolle

A1  
1



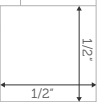
test square  
V1.0

FLEECEMÜTZE

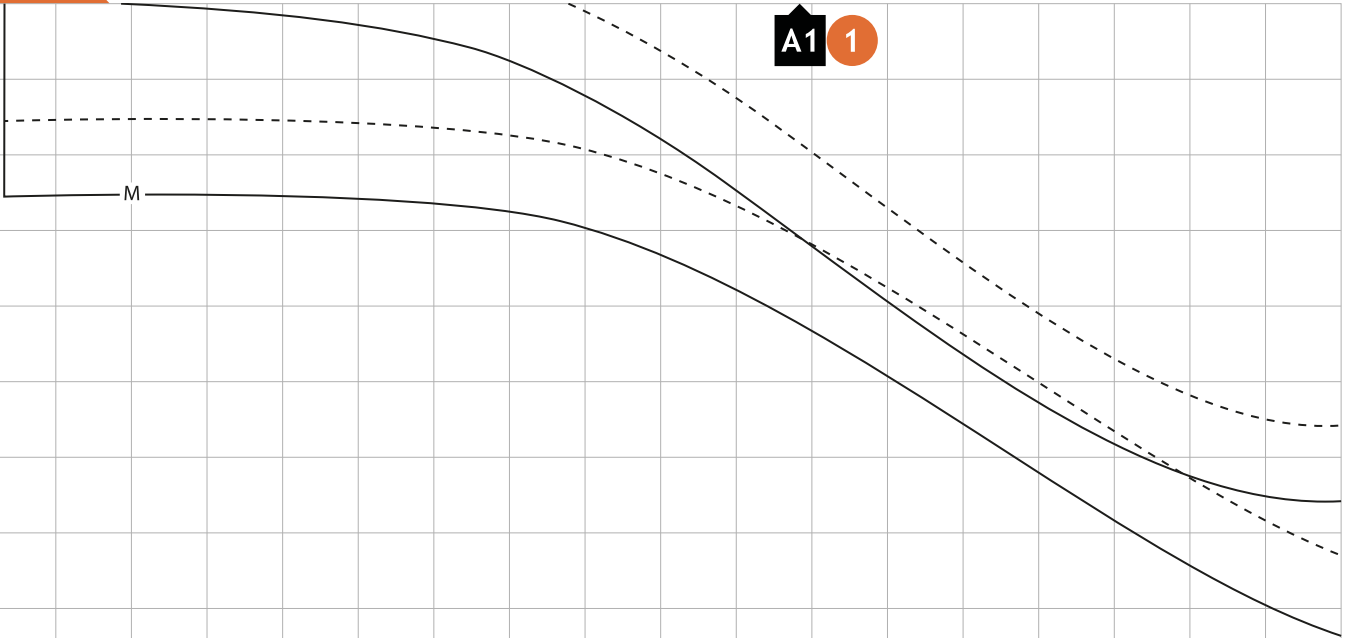


A2  
1

B1  
1



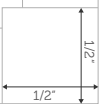
FLEECEMÜTZE



G2  
1



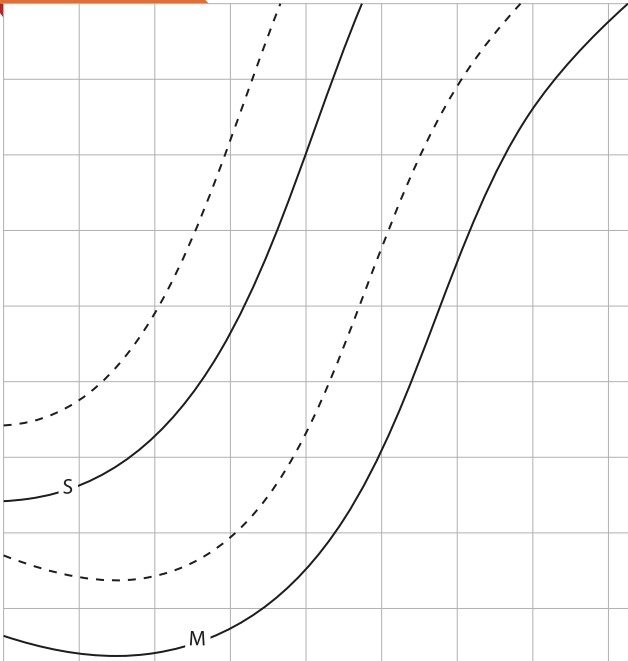
Größenkontrolle



test square  
V1.0

FLEECEMÜTZE

B1 1

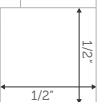


G2

1



Größenkontrolle



test square  
V1.0